

UPPSALA

RNP RWY 03

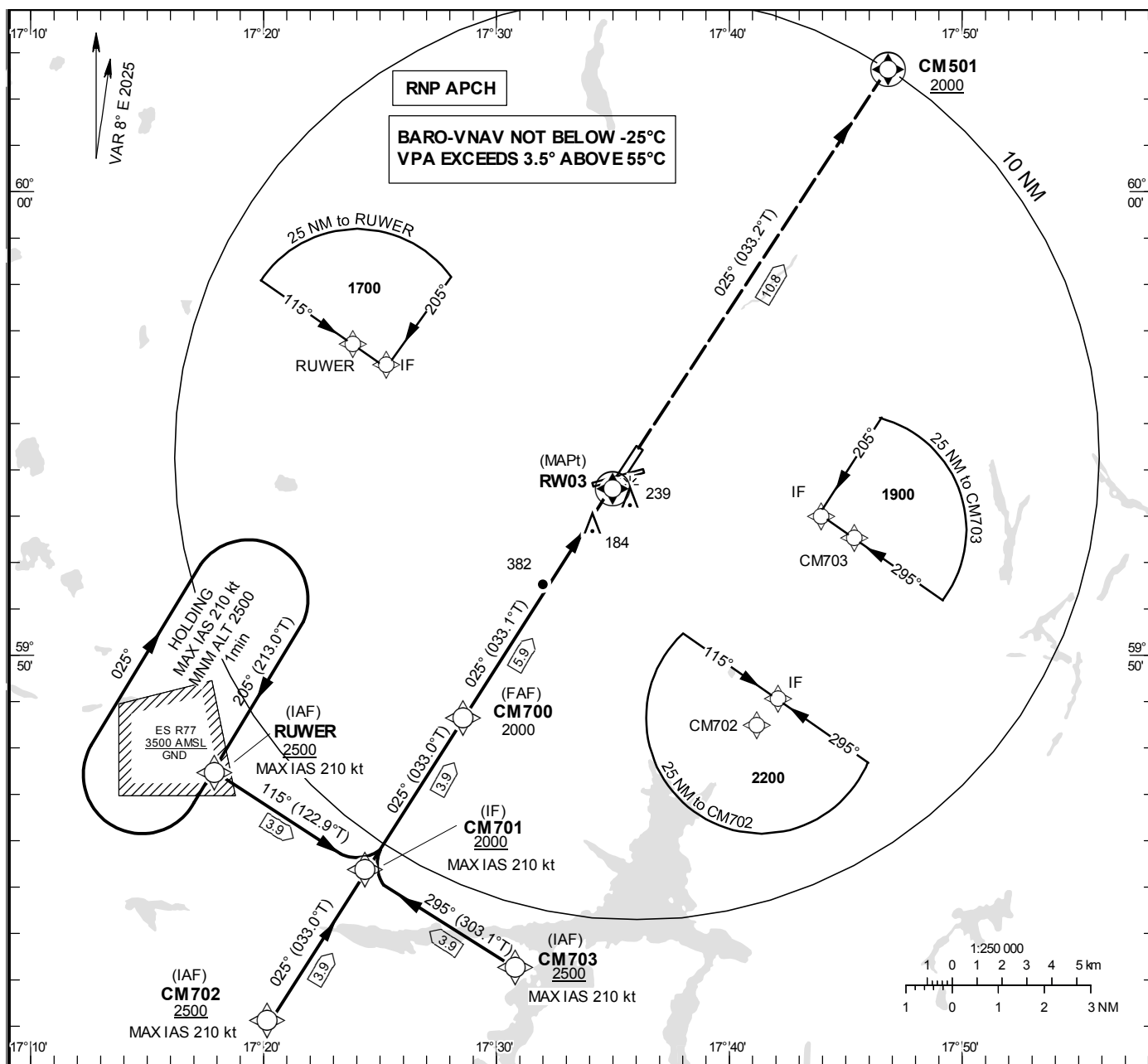
EGNOS CH 72281 E 03A

INSTRUMENT
APPROACH
CHART – ICAO

THR ELEV 60 ft, AD ELEV 69 ft

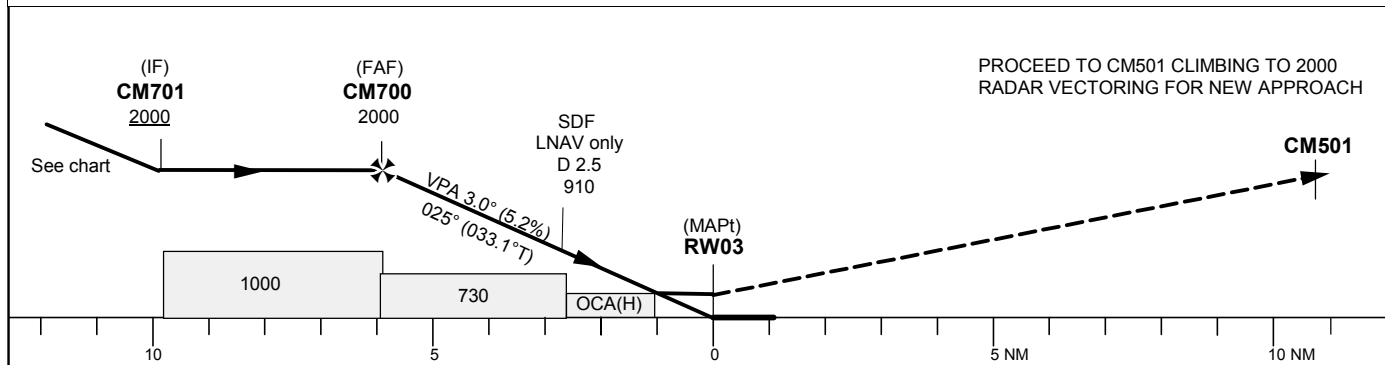
OCH are related to THR.
BRG are MAG (True).
ALT, HGT and ELEV in ft.

UPPSALA TOWER	119.200
UPPSALA APPROACH	130.400



TA 5000 ft AMSL

RDH 50.0 ft



OCA (H)					Final approach		Distance FAF-MAPt 5.9 NM					
Cat of ACFT	A	B	C	D	Dist to RW03 (NM)		5	4	3	2		
LPV	314 (254)	326 (266)	334 (274)	345 (285)	ALT		1700	1380	1070	750		
LNAV/VNAV	369 (309)	381 (321)	390 (330)	400 (340)	GS	kt	80	100	120	140	160	180
LNAV		490 (430)			Rate of descent	ft/min	425	530	635	745	850	955

CHANGE: Editorial.

UPPSALA

RNP RWY 03 via CM703

Path Term	Waypoint Identifier	Fly-over	Course °M(°T)	Dist (NM)	Turn Dir	Rest Alts (ft AMSL)	Speed Limits (kt)	VPA/ RDH (°/ft)	Rec Navaid	Navigation Specification
IF	CM703	-	-	-	-	+2500	-210	-	-	RNP APCH
TF	CM701	-	295° (303.1°)	3.9	-	+2000	-	-	-	RNP APCH

RNP RWY 03 via RUWER

Path Term	Waypoint Identifier	Fly-over	Course °M(°T)	Dist (NM)	Turn Dir	Rest Alts (ft AMSL)	Speed Limits (kt)	VPA/ RDH (°/ft)	Rec Navaid	Navigation Specification
IF	RUWER	-	-	-	-	+2500	-210	-	-	RNP APCH
TF	CM701	-	115° (122.9°)	3.9	-	+2000	-	-	-	RNP APCH

RNP RWY 03 via CM702

Path Term	Waypoint Identifier	Fly-over	Course °M(°T)	Dist (NM)	Turn Dir	Rest Alts (ft AMSL)	Speed Limits (kt)	VPA/ RDH (°/ft)	Rec Navaid	Navigation Specification
IF	CM702	-	-	-	-	+2500	-210	-	-	RNP APCH
TF	CM701	-	025° (033.0°)	3.9	-	+2000	-	-	-	RNP APCH

Path Term	Waypoint Identifier	Fly-over	Course °M(°T)	Dist (NM)	Turn Dir	Rest Alts (ft AMSL)	Speed Limits (kt)	VPA/ RDH (°/ft)	Rec Navaid	Navigation Specification
IF	CM701	-	-	-	-	+2000	-210	-	-	RNP APCH
TF	CM700	-	025° (033.0°)	3.9	-	+2000	-	-	-	RNP APCH
TF	RW03	Y	025° (033.1°)	5.9	-	@110	-	-3.0/50	-	RNP APCH
TF	CM501	Y	025° (033.2°)	10.8	-	+2000	-	-	-	RNP APCH
VM	-	-	025°	-	-	-	-	-	-	RNP APCH

RNP RWY 03 – Holding at RUWER

Path Term	Waypoint Identifier	Fly-over	Course °M(°T)	Dist (NM)	Turn Dir	Rest Alts (ft AMSL)	Speed Limits (kt)	VPA/ RDH (°/ft)	Rec Navaid	Navigation Specification
HM	RUWER	Y	205° (213.0°)	-	R	+2500	-210	-	-	RNAV 1

FAS Data Block

RNP RWY 03

Input data

Operation Type	0
SBAS Provider	1 (EGNOS)
Airport Identifier	ESCM
Runway	03
Runway Letter	0 (None)
Approach PerformanceDesignator	0
Route Indicator	
ReferencePath Data Selector	0
ReferencePathIdentifier	E03A
LTP/FTP Latitude	595335.2925N
LTP/FTP Longitude	0173459.7450E
LTP/FTP Ellipsoidal Height (metres)	42.2
FPAP Latitude	595426.8200N
Delta FPAP Latitude (seconds)	51.5275
FPAP Longitude	0173606.8555E
Delta FPAP Longitude (seconds)	67.1105
ThresholdCrossingHeight	50.0
TCH UnitsSelector	0 (feet)
GlidepathAngle (degrees)	3.00
Course Width (metres)	105.00
Length Offset (metres)	0
HAL (metres)	40.0
VAL (metres)	50.0

Output data

Data Block	10 0D 03 13 05 03 00 00 01 33 30 05 79 0E B4 19 42 C1 8B 07 A6 15 8F 92 01 4D 0C 02 F4 01 2C 01 64 00 C8 FA 18 59 8D 84
Calculated CRC Value	18598D84

RequiredAdditional Data

ICAO Code	ES
LTP/FTP Orthometric Height (metres)	18.2